

# Tools for the Recording Technologist

## AASM V 2.0\* Compliant - Profusion Sleep4 meets the latest AASM scoring rules.

\*AASM Manual for the Scoring of Sleep and Associated Events, Version 2.0.3 (at time of release)

### Allows expanded reporting for hypopneas including:

- Hypopneas meeting the new AASM rule of a 3% desaturation or an arousal
- Hypopneas meeting the traditional Medicare rule of a 4% desaturation
- Hypopneas meeting your traditional lab rule
- New report codes allow reporting of AASM, Medicare, and/or traditional hypopneas for numeric or chronological bi-level pressure treatment.

## Totally Redesigned Ribbon Bar User Interface

The software has been redesigned to use the popular intuitive ribbon bar menu user interface, replacing the traditional menu and toolbar. Related functions are now organized in logical groups - making them easier to find.

## Enhanced Pageback (PSG Online) Integrated Pageback

Full automatic and manual on-line scoring or editing capabilities.

## Video Review in Pageback

Don't miss what the patient was doing while you attended to another.

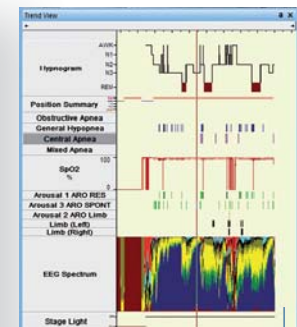
## Respiratory SUM channel is also available in Pageback view.

The Respiratory Sum channel aids in the identification and classification of respiratory events, making it easier to score during acquisition.

## Decision Assist

Aids deciding when to start CPAP titration in a split night study. Set your criteria for sleep and REM time, respiratory disturbances and oxygen saturation levels.

Parameter	Threshold	Current Value
Time since lights out	120 minutes	47 minutes
Time asleep	60 minutes	29 minutes
Time in REM sleep	10 minutes	0 minutes
Total Apneas and Hypopneas	40	11
AHI	40	16.9
Time with SpO2 <= 80	10 minutes	0 minutes
Number of desats >= 10	5	0
Study time remaining	180 minutes	301 minutes



## On-Line Trend View

Provides extensive information including any scored events, particularly useful during CPAP or Bi-level treatment.

## Drag-and-Drop Traces

Drag traces off screen to delete, drag in from a list to select. Move a trace by dragging and dropping in a new position.

## ECG free trace transformation

Score during acquisition and frustrated with ECG artifact? **ECGfree** is now available during Pageback.

Turn this

To this ... with ECG free

## Tools for the Recording Technologist

### AASM V 2.0\* Compliant -

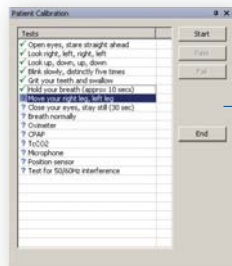
Profusion Sleep4 meets the latest AASM scoring rules.

#### Enhanced My Workspace

Now recording staff can have four individualized workspaces to customize their views and the ability to return to a default workspace when needed.

#### Online Respiratory Rate

Quick on-screen calculation. Provides additional information, especially for pediatric patients.



#### Simple Patient Calibration Routine

Conveniently saves calibration data separately from the study data. Easily compare patient baseline to current study data.

#### Support for High-Definition Video Cameras Fully Synchronized High Definition Digital Video/Audio Recording

Helpful when studying patients with parasomnias and seizure disorders. Features digital pan, tilt and zoom to record patient activity throughout the night.



#### Konno-Mead Loops

Visual breathing analysis tool. Identify periods with increased work of breathing or paradoxical breathing.

#### Flow Volume Loops

The easiest way to monitor upper airway resistance.

#### Visual and/or Audio Notifications on Calibrated Channels

Helps ensure critical events are not missed.

Time	SpO2	Snoring	Observed resp events	Humidity level	Comments	Confirm	Confirmed Time
01/06/2006 11:15:37 PM	97%	Soft, intermittent	only at sleep onset	N/A	rapid Sleep onset	Confirmed	01/06/2006 11:17 PM
01/06/2006 11:30:37 PM	95%	Yes	mostly hypopneas, some OA	N/A	no supine sleep	Confirmed	01/06/2006 11:37 PM
01/06/2006 11:45:37 PM	95%	Yes, loud supine	OA, Hypopneas	N/A	Now supine	Confirmed	01/06/2006 11:47 PM

#### Charting Tool

A handy reminder to chart observations. User defined forms that pop-up at pre-defined intervals.

#### User Defined Manual Inputs

Create inputs to manually track important information such as body position and snoring level.



## PROFUSION nexUS™ The Ultimate Lab Management Tool

Profusion Sleep4 integrates directly within the Profusion nexUS Lab Management System to optimize workflow and enhance efficiency in your diagnostic or research laboratory.

Profusion nexUS is a patient centric data and management solution for the laboratory.

Profusion nexUS is extremely flexible and securely manages and helps control data in any study setting. Whatever your requirement, no matter how large or small your lab, you'll benefit from the impressive capabilities and efficiency offered by Profusion nexUS.

All specifications are subject to change without notice. Please contact your Compumedics representative for latest technical information, pricing and product availability. Compumedics profusion is a trademark of Compumedics, COMPUMEDICS and the Compumedics logo are all registered trademarks of Compumedics.



For more information on any of our products or services please visit us on the web at:

**NEUROSPEC**  
 Research Neurosciences

NEUROSPEC AG  
 Stansstadterstrasse 10  
 CH-6370 Stans  
 Switzerland  
 www.neurospec.com  
 info@neurospec.com  
 Tel +41 41 371 07 04  
 Fax +41 41 371 07 03

25 YEARS OF  
 SLEEP DIAGNOSTICS  
 EXCELLENCE  
 Since 1987

AG348 Issue 1